

# AVC AMERICAN VACUUM C O M P A N Y

EST 1910 • FAMILY OWNED • AMERICAN MADE

## VACUUM HOSE & CLEANING TOOLS

American Vacuum supplies a variety of industrial vacuum hose tools and accessories. These vacuum tools & accessories range from hoses, tool holders, hangers and other tool kits.



INDUSTRIAL VACUUMS ■ HOSE & CLEANING TOOLS ■ CENTRAL VACUUM TUBE & FITTINGS

**AMERICAN VACUUM COMPANY**, 6700 W TOUHY AVE NILES, IL 60714

**TOLL FREE:** 800.321.2849 | **FAX:** 847.674.0214

[www.americanvacuum.com](http://www.americanvacuum.com) | [sales@americanvacuum.com](mailto:sales@americanvacuum.com)

# FLEXIBLE VACUUM HOSE



## SERIES 1000

**Gray, light-weight, flexible plastic hose.** Crush-proof design. Ideal for light housekeeping applications and conveying of non-abrasive materials

**DIAMETER:** 1-1/2", 2"

**LENGTHS:** 10', 15', 25', 50'

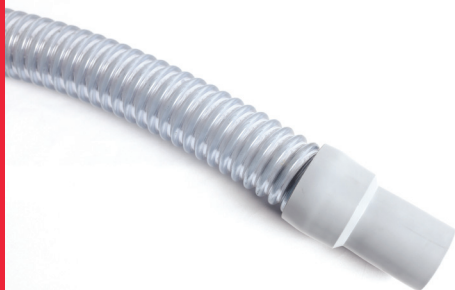


## SERIES 2000

**Gray, light-weight, wire-reinforced plastic hose.** Our most flexible hose. Hose can handle full vacuum and has grounding capabilities.

**DIAMETER:** 1-1/2", 2"

**LENGTHS:** 10', 15', 25', 50'



## SERIES 4000

**Clear, heavy duty plastic hose.** Reinforced with PVC helix and rated for full vacuum. Smooth bore inside.

**DIAMETER:** 1-1/2", 2"

**LENGTHS:** 10', 15', 25', 50'



# GROUNDED VACUUM HOSE

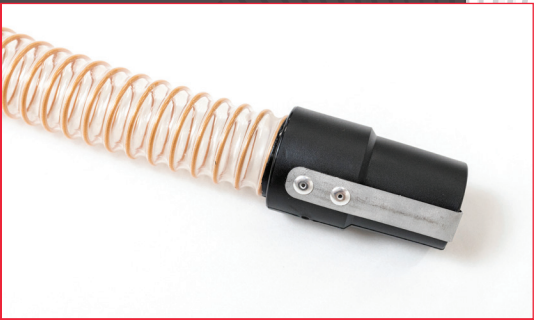


## SERIES 2050

**Gray, grounded, wire-reinforced plastic vacuum Hose.** Wire runs through cuff for grounding. Light-Medium duty applications.

**DIAMETER:** 1-1/2", 2"

**LENGTHS:** 10', 15', 25', 50'



## SERIES 4050G

**Clear, grounded, urethane, smooth inside, vacuum hose.** The hose is wire-reinforced with molded on carbon cuffs. The 4050G is completely grounded with direct metal contacts at both ends. Light-Medium duty applications

**DIAMETER:** 1-1/2", 2"

**LENGTHS:** 10', 15', 25', 50'



## SERIES 5050

**Black, heavy duty grounded neoprene hose.** Abrasion resistant, smooth bore inside, corrugated outside. heavy duty applications.

**DIAMETER:** 1-1/2", 2"

**LENGTHS:** 10', 15', 25', 50'



## SERIES 6050

**Black, heavy duty grounded neoprene hose.** Abrasion resistant, smooth bore inside & outside. Heavy duty applications.

**DIAMETER:** 1-1/2", 2"

**LENGTHS:** 10', 15', 25', 50'

# STATIC DISSIPATING **VACUUM HOSE**



## **SERIES 4050**

**Clear, static proof, urethane, smooth inside, vacuum hose.** Wire-reinforced with molded on carbon cuffs. Flexible yet durable, no exposed wire. Light-Medium duty applications.

**DIAMETER:** 1-1/2", 2"

**LENGTHS:** 10', 15', 25', 50'



## **SERIES 7050**

**Black, static proof, light-weight, crush proof, plastic vacuum hose.** Swivel or non-swivel cuffs available. Light-Medium duty applications.

**DIAMETER:** 1-1/2", 2"

**LENGTHS:** 10', 15', 25', 50'



## **SERIES 8000**

**Black, static dissipating, abrasion resistant vacuum hose.** More flexible than rubber. Heavy duty applications.

**DIAMETER:** 1-1/2", 2"

**LENGTHS:** 10', 15', 25', 50'



## **SERIES 8050**

**Safety yellow static proof, light-weight, Crush Proof Plastic Vacuum Hose.** Swivel or Non swivel cuffs available.

**DIAMETER:** 1-1/2", 2"

**LENGTHS:** 10', 15', 25', 50'

# TOOLS

## 1-1/2" OPERATOR HANDLES



### 800015 FLOOR ROD 1-1/2"

**54" Aluminum Floor Rod** with swivel end, light-weight handle for use with all 1-1/2" floor tools.



### 800019 WALL ROD 1-1/2"

**60" Aluminum Wall Rod** with swivel end, light-weight handle for use with all 1-1/2" overhead cleaning tools.



### 800064 STRAIGHT EXTENSION 1-1/2"

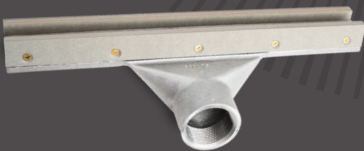
**54" Aluminum Straight Extension Rod**, light-weight extension handle for use with #800019 and #875019 Wall Rods. Sections slip fit together.

## 1-1/2" FLOOR TOOLS



### 800070 12" WIDE MOUTH GULPER TOOL

**For recovery of large objects and bulk material.** Gulper has a hard fiber shoe.



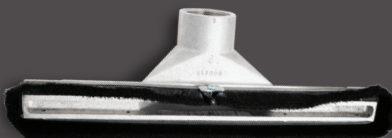
### 800108 14" FIBER FLOOR TOOL

**14" wide floor tool for use on concrete floors with smooth or rough surfaces.** Tool has a hard fiber shoe.



### 800109 14" SQUEEGEE FLOOR TOOL

**14" wide floor tool for liquid and slurry pickup.**



### 800111 14" BRUSH FLOOR TOOL

**14" wide brush floor tool for all surfaces.**

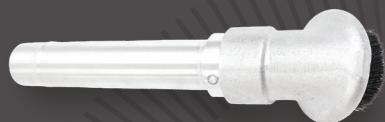
## 1-1/2" HAND TOOLS

**611A1 ALUMINUM CREVICE TOOL 12"**

Ideal for cleaning in tight & confined areas.

**800022-H HAND TOOL 4" ROUND DUST BRUSH**

Cast aluminum brush with stiff bristles for loosening debris.

**800024 HAND TOOL 3" ROUND DUST BRUSH**

Cast aluminum brush with stiff bristles for loosening debris.

**800035 1-1/2" PLASTIC CREVICE TOOL**

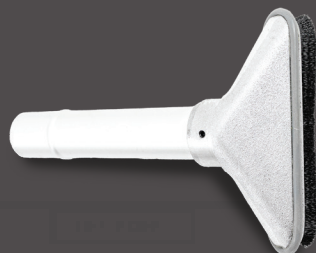
12" long plastic crevice tool for cleaning narrow and difficult to reach places.

**319 1-1/2" CAR WASH TOOL**

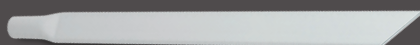
The 319 1-1/2" orange care wash tool, A.K.A. Duck Foot, is the perfect tool for vacuuming miscellaneous debris. This tool has a 4" opening that makes quick work of light collection applications.

**800034 STEEL CREVICE TOOL 24"**

Ideal for cleaning tight & confined areas.

**800038 6" WIDE UPHOLSTERY TOOL**

Cast aluminum brush tool, brush insert is removable.

**800104 PLASTIC CREVICE TOOL 28"**

Ideal for cleaning in tight & confined spaces.



**801019 MACHINERY CLEANING NOZZLE 17"**

**Rubber flexible nozzle tapered to 3/4"** for cleaning in tight places. Recommended for electrical equipment, core boxes, and places where a rigid tool is not suitable.

**801035 BULK CLEANING TUBE WITH BREATHER 36"**

**Designed with an air breather tube** to allow tool end to be submerged in bulk dry material or liquid. Painted steel.

**801036 VACUUM NOZZLE 10"**

**Provides high velocity air stream** for blowing loose debris in tight places. Can also be used with vacuum.

**801115 1-1/2" X 15" ALUMINUM BULK PICK-UP TUBE**

**For handling bulk material.**

**801118 1-1/2" X 18" BULK PICK-UP NOZZLE PAINTED**

**For bulk recovery.** The nozzle is powder coated black.

**801136 1-1/2" X 36" ALUMINUM BULK PICK-UP TUBE**

**For sump cleaning and handling of bulk material.** See also utility tool. 16 Ga Aluminum.

**1-1/2" OVERHEAD TOOLS****800022 4" ROUND DUST BRUSH**

**Cast aluminum round dust brush.** Versatile tool for cleaning many different type surfaces. Use with the 800019 Wall Rod.

**800026 10" WALL BRUSH**

**Cast aluminum wall brush,** for wall and overhead cleaning. Use with the 800019 Wall Rod. Brush has a 10" cleaning path.



## 800030 PIPE CLEANING TOOL 4" - 6" PIPE

**Cast aluminum pipe cleaning tool** with curved brush insert. Ideal for cleaning smaller diameter pipe. Use with the 800019 Wall Rod.

## 800032 PIPE CLEANING TOOL 6" - 12" PIPE

**Cast aluminum pipe cleaning tool** with curved brush insert. Ideal for cleaning larger diameter pipe. Use with the 800019 Wall Rod.

## 2" OPERATOR HANDLES



## 800201 FLOOR ROD 2"

**54" Aluminum handle** for use with 2" Floor Tools and Master Nozzle

## 800205 WALL ROD 2"

**54" Aluminum Rod** for use with all 2" overhead cleaning tools.

## 800203 STRAIGHT EXTENSION ROD 2"

**55" Aluminum extension rod** for use with #800205 Wall Rod. Slip fits together.

## 2" FLOOR TOOLS



## AW-700 18" WHEELED BRUSH/SQUEEGEE COMBO

**Our 18" floor tool** is easy to operate with a duel wheel set-up. Can be use as a brush or squeegee.

## 800212 WIDE MOUTH GULPER 12"

**For picking up large objects wt or dry.**

## 800225 MASTER NOZZLE 2"

**Use with any adapters below:**

500033 Replacement Locking Screws

390061 Replacement Screw Retainers 2/Set





## 800226 BRUSH FLOOR ADAPTER 14"

Versatile tool for all surfaces. Ideal for uneven surfaces.



## 800227 SQUEEGEE FLOOR ADAPTER 14"

For liquid and slurry pickup.



## 800228 FIBER FLOOR ADAPTER 14"

For use on concrete floors with smooth or rough surfaces.



## 800229 BRUSH FLOOR ADAPTER 18"

Versatile tool for cleaning all floor surfaces. Ideal for uneven surfaces



## 800230 SQUEEGEE FLOOR ADAPTER 18"

For liquid and slurry pickup.



## 800231 FIBER FLOOR ADAPTER 18"

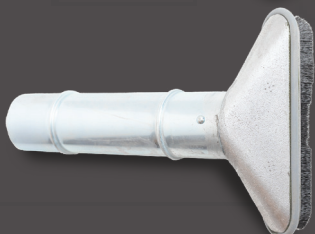
For use on concrete floors with smooth or rough surfaces.

### 2" HAND TOOLS



## 800211 4" ROUND DUST BRUSH HAND TOOL

For general small area cleaning with stiff bristles for loosening of debris. 800023 Replacement Bristle Insert.



## 800221 6" WIDE HAND TOOL WITH BRUSH

Cast aluminum brush hand tool, brush insert is removable. 6" opening allows for medium small to medium size clean-ups. Ideal for bench and table cleaning, as well as hard to reach areas. 800023 Replacement Bristle Insert.

**800224 HAND BRUSH 10"**

**Cast aluminum brush hand tool**, ideal for bench and table top cleaning. 10" opening is wide enough to handle large amounts of material at a time. **800027 Replacement Bristle Insert.**

**801019-2 MACHINERY CLEANING NOZZLE 17"**

**Rubber flexible nozzle tapered to 3/4"** for cleaning in tight places. Recommended for electrical equipment, core boxes, and places where a rigid tool is not suitable.

**802013 STEEL CREVICE TOOL 40"**

**Ideal for cleaning in tight & confined areas.** 40" length allows for cleaning under racking and hard to reach areas.

**802035 BULK CLEANING TUBE WITH BREATHER 36"**

**Designed with an air breather tube** to allow tool end to be submerged in bulk dry material or liquid. Painted steel.

**802115 2" X 15" ALUMINUM BULK PICK-UP TUBE**

**For sump cleaning and handling of bulk material.**

**802236 2" X 36" ALUMINUM BULK PICK-UP TUBE**

**For sump cleaning and bulk material handling.**

**2" OVERHEAD CLEANING TOOLS****800026-0 WALL BRUSH 10"**

**Cast aluminum wall brush.** For wall and overhead cleaning. Use with 800025 Wall Rod. Brush has a 10" cleaning path. **800027 Replacement Bristle Insert.**

**800030-0 PIPE CLEANING TOOL 4" - 6" PIPE**

**Cast aluminum pipe cleaning tool** with curved brush insert. Ideal for cleaning smaller diameter pipe. Use with the 800205 Wall Rod. **800031 Replacement Bristle Insert.**



## 800032-0 PIPE CLEANING TOOL 6" - 12" PIPE

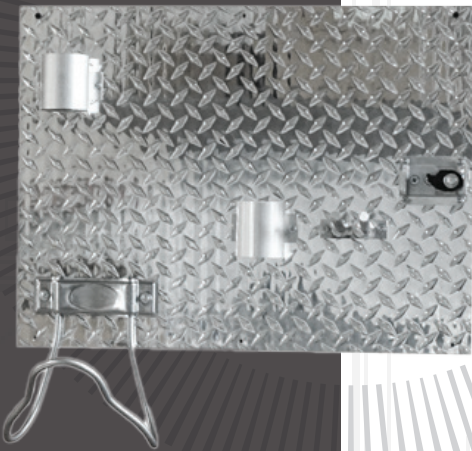
**Cast aluminum pipe cleaning tool** with curved brush insert. Ideal for cleaning larger diameter pipe. Use with the 800205 Wall Rod. **800033 Replacement Bristle Insert.**



## 800022-0 ROUND DUST BRUSH 4"

**Cast aluminum round dust brush.** Versatile tool for cleaning many different type surfaces. Use with the 800205 Wall Rod. **800023 Replacement Bristle Insert.**

## TOOL BOARD AND HANGERS



## 541900 ALUMINUM TOOL BOARD FOR 1 1/2" GROUND KITS

**Diamond plate aluminum tool board** with a compact design for easy mounting and storage of your hose and tools. This basic design has specific holders for a vacuum hose, floor rod, floor tool, hand cleaning tool & crevice tool for 1-1/2" and 2" tool kits.



## HS-150 STAINLESS STEEL HOSE SADDLE

**HS-150 Stainless Steel Hose Saddle** can hold up to a 50' vacuum hose. These saddles are ideal for keeping your industrial vacuum hoses off the ground and out of the way.





# AVC AMERICAN VACUUM C O M P A N Y

EST 1910 • FAMILY OWNED • AMERICAN MADE

INDUSTRIAL VACUUMS • HOSE & CLEANING TOOLS • CENTRAL VACUUM TUBE & FITTINGS

**AMERICAN VACUUM COMPANY**, 6700 W TOUHY AVE NILES, IL 60714

**TOLL FREE:** 800.321.2849 | **FAX:** 847.674.0214

[www.americanvacuum.com](http://www.americanvacuum.com) | [sales@americanvacuum.com](mailto:sales@americanvacuum.com)